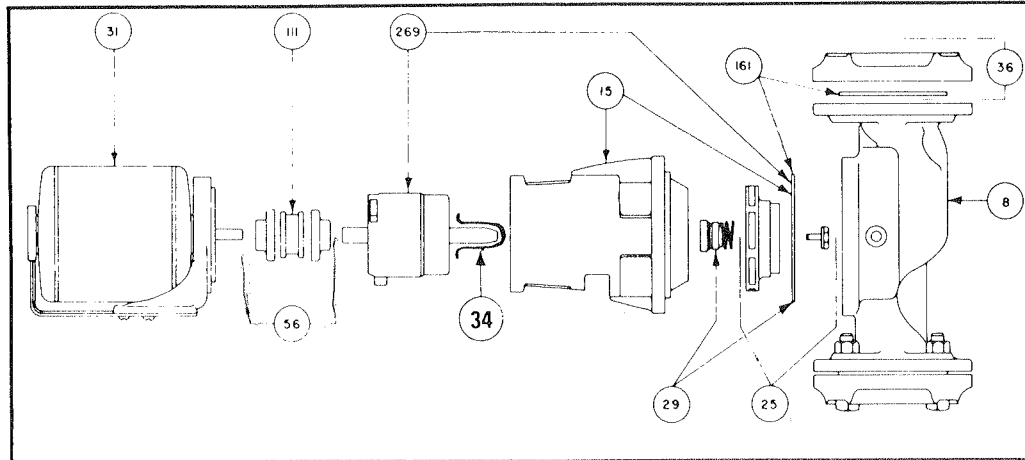
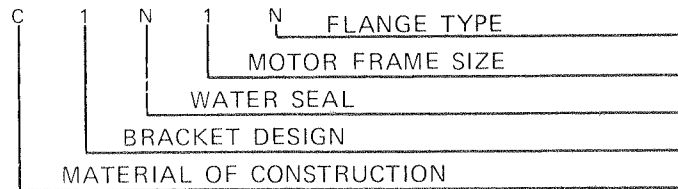


REPLACEMENT PARTS FOR (-9) AND SERIAL NUMBER CARTRIDGE DESIGN PUMPS



SERIAL NUMBER CODE

1600 - 4.25



MATERIAL OF CONSTRUCTION	
X	O O O O O
A	CAST IRON PUMP AND IMPELLER (3)
B	ALL BRONZE PUMP AND IMPELLER
C	CAST IRON PUMP AND BRONZE IMPELLER

MOTOR FRAME SIZE*	
	O O O X O
1	48 FRAME (1/4, 1/3, 1/2 HP)
2	56 FRAME (3/4, 1 HP)
3	56 FRAME (1 1/2, & 2 HP)
4	56 FRAME (3 HP)

* Refer to standard motors only. See nameplate for other motors.

BRACKET DESIGN	
	O X O O O
1	ALL CURRENT STYLE PUMPS

FLANGE TYPE	
	O O O O X
N	NPT (STANDARD)
D	DIN (EXPORT)

WATER SEAL TYPE, ITEM #29	
	O O X O O
N	1600 - 170RP NI - RESIST
H	1600 - 170HRP TUNGSTEN CARBIDE
E	1600 - 170ERP CERAMIC

ITEM #8 REPLACEMENT BODY		
PUMP MOD. NO.	CAST IRON	BRONZE
121	121 - 018RP	121 - 018BRP
122	"	"
131, 32, 33 & 38 ¹	133 - 150RP	133 - 150BRP
1600, 10, 11 ¹	1610 - 001RP	1610 - 001BRP
1602, 1604 ²	N/A	N/A
1612, 14, 15	1614 - 001RP	1614 - 001BRP
1616, 18, 19	1618 - 004RP	1618 - 004BRP
1620, 22, 24	1634 - 001RP	1634 - 001BRP
1630, 1632	"	"
1634, 1635	"	"
1636, 1638	1640 - 002RP	1640 - 002BRP
1640, 1641	"	"

ITEM #36 REPLACEMENT FLANGE SET		
PUMP MOD. NO.	CAST IRON	BRONZE
121	1600 - 033RP	1600 - 033BRP
122	1600 - 034RP	1600 - 034BRP
131, 32, 33, & 38 ¹	"	"
1600, 10, 11 ¹	1600 - 031RP	1600 - 031BRP
1602, 1604 ²	"	"
1612, 14, 15	"	"
1616, 18, 19	1600 - 032RP	1600 - 032BRP
1620, 22, 24	"	"
1630, 1632	"	"
1634, 1635	"	"
1636, 1638	1600 - 174RP	1600 - 174BRP
1640, 1641	"	"

Note (1) When replacing Item #8 body on 131, 132, 133, 138 and 1600C - 1& -9, you must also order current style impeller.
 Note (2) Body for the 1602 & 1604 are no longer available. Consult factory.
 Note (3) 121 thru 138 only.