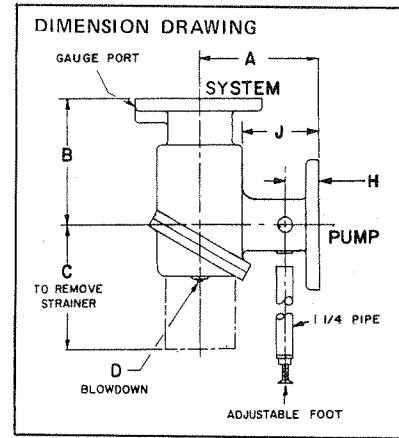


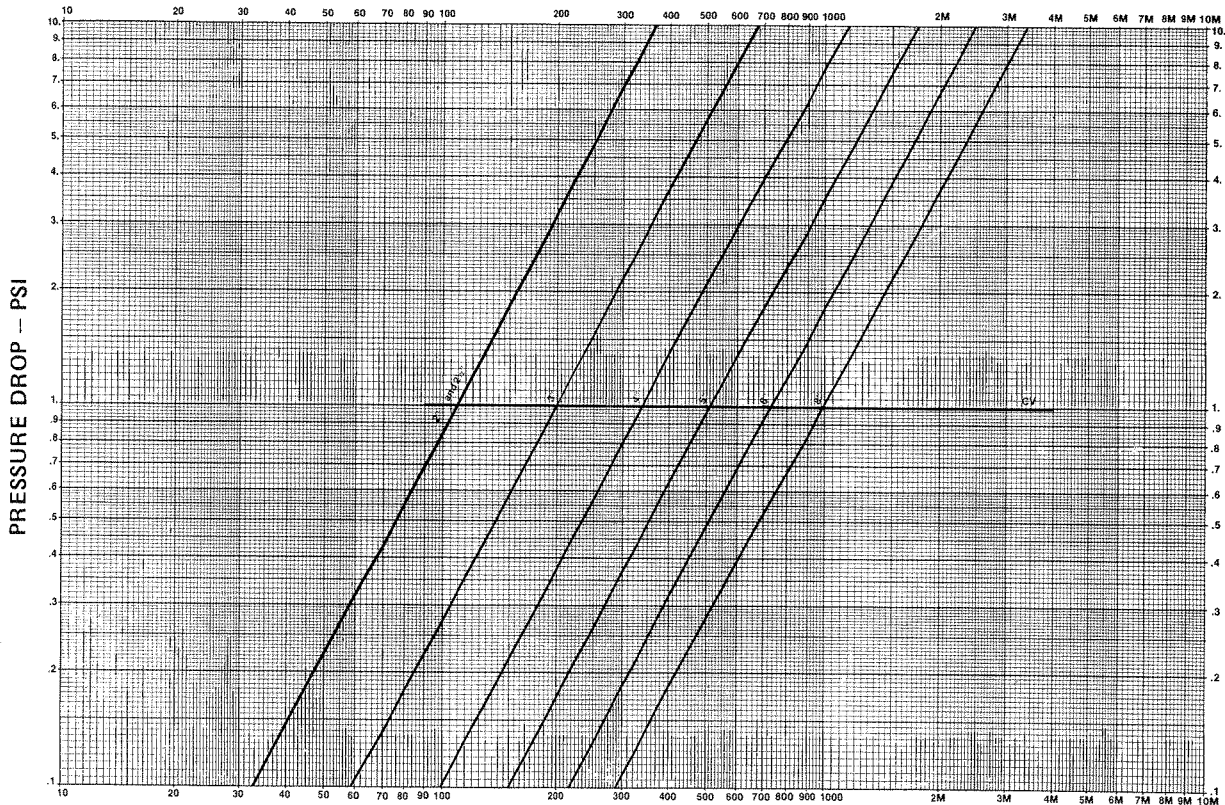


Dimensions



MODEL	SYSTEM	PUMP	C.V. Factor	Free Area Sq. In.	DIMENSIONS						Ship. Wgt. Lbs.
					A	B	C	D	H	J	
350	3 Flg.	2 Flg.	110	40	7 $\frac{1}{8}$ "	7 $\frac{3}{8}$ "	8 $\frac{1}{4}$ "	3 $\frac{3}{4}$ "	2 $\frac{3}{8}$ "	4 $\frac{5}{8}$ "	45
351	3 Flg.	2 $\frac{1}{2}$ Flg.	110	40	7 $\frac{1}{8}$ "	7 $\frac{3}{8}$ "	8 $\frac{3}{4}$ "	3 $\frac{3}{4}$ "	2 $\frac{3}{8}$ "	4 $\frac{5}{8}$ "	45
352	3 Flg.	3 Flg.	200	50	7 $\frac{1}{8}$ "	7 $\frac{3}{8}$ "	8 $\frac{1}{4}$ "	1	2 $\frac{3}{8}$ "	4 $\frac{1}{8}$ "	57
353	4 Flg.	3 Flg.	200	50	7 $\frac{1}{8}$ "	7 $\frac{3}{8}$ "	8 $\frac{1}{4}$ "	1	2 $\frac{3}{8}$ "	4 $\frac{1}{8}$ "	62
354	4 Flg.	4 Flg.	350	80	9 $\frac{1}{8}$ "	7 $\frac{1}{4}$ "	9 $\frac{1}{2}$ "	1	3 $\frac{1}{2}$ "	5 $\frac{3}{8}$ "	95
348	5 Flg.	4 Flg.	350	80	9 $\frac{1}{8}$ "	7 $\frac{1}{4}$ "	9 $\frac{1}{2}$ "	1	3 $\frac{1}{2}$ "	5 $\frac{3}{8}$ "	112
349	5 Flg.	5 Flg.	520	125	10	9 $\frac{1}{8}$ "	11 $\frac{7}{8}$ "	1	3	5 $\frac{3}{8}$ "	150
355	6 Flg.	4 Flg.	350	80	9 $\frac{1}{8}$ "	7 $\frac{1}{4}$ "	9 $\frac{1}{2}$ "	1	3 $\frac{1}{2}$ "	5 $\frac{3}{8}$ "	125
356	6 Flg.	5 Flg.	520	125	10	9 $\frac{1}{8}$ "	11 $\frac{7}{8}$ "	1	3	5 $\frac{3}{8}$ "	160
357	6 Flg.	6 Flg.	760	150	11	8 $\frac{3}{4}$ "	11 $\frac{7}{8}$ "	1	3	5 $\frac{1}{8}$ "	180
358	8 Flg.	6 Flg.	760	150	11	8 $\frac{3}{4}$ "	11 $\frac{7}{8}$ "	1	3	5 $\frac{1}{8}$ "	205
359	8 Flg.	8 Flg.	1000	275	11 $\frac{3}{4}$ "	13 $\frac{1}{8}$ "	16	1 $\frac{1}{4}$ "	2 $\frac{3}{4}$ "	5 $\frac{1}{4}$ "	280
370	10 Flg.	8 Flg.	1000	275	11 $\frac{3}{4}$ "	13 $\frac{1}{8}$ "	16	1 $\frac{1}{4}$ "	2 $\frac{3}{4}$ "	5 $\frac{1}{4}$ "	298

PRESSURE DROP CURVE



Pressure - up to 175 PSI in accordance with ASA B16.1
 Temperature - up to 250° F.

FLOW RATE - GPM

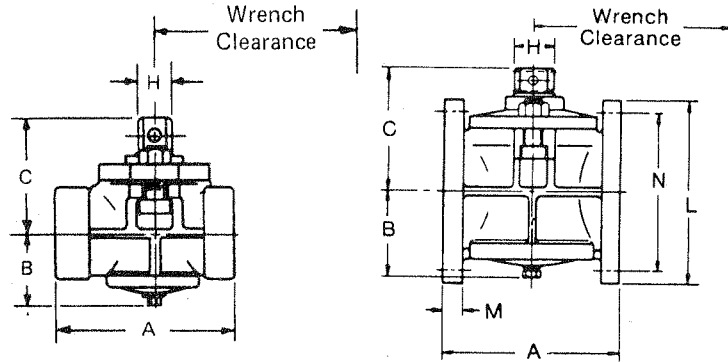
Printed in U.S.A.

Taco, Inc. 1160 Cranston Street, Cranston, Rhode Island 02920
 Taco (Canada), Ltd. 3090 Lenworth Drive, Mississauga, Ontario

Telephone: (401) 942-8000 Telex: 92-7627
 Telephone: (416) 625-2160 Telex: 06-961179

Printed in U.S.A.

Dimensions



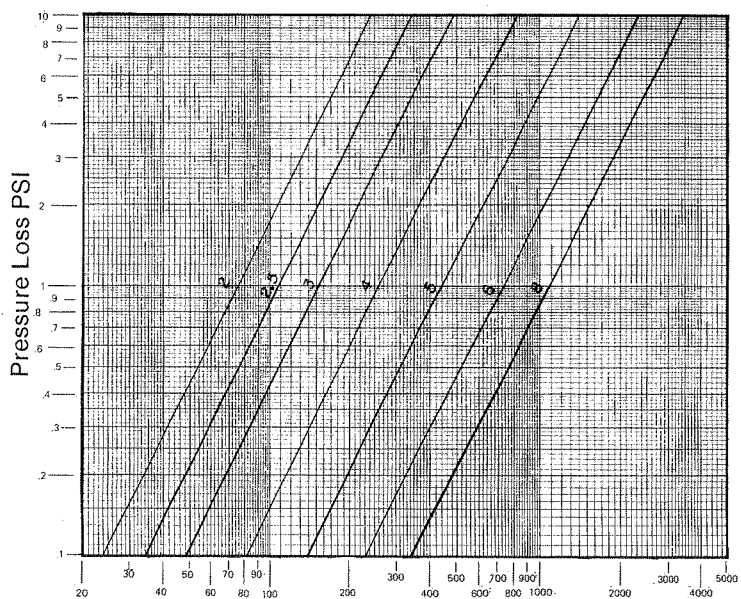
SPECIFICATIONS

BODY MATERIAL Semi-Steel
 CHECK VALVE — SPRING LOADED

Resilient - Synthetic Rubber Seat - Bubble Tight
 PLUG Non-Lubricated Eccentric Action - Downstream Throttling
 OPERATING TEMPERATURE up to 240°F
 PRESSURE RATING .. up to 175 PSI (per ASA B16.1, Class 125)

Model No.	Size	Connect.	A	Width Max.	B	C	H	L	M	N	Wrench Clearance	Cv	Wht.
360T	2"	Threaded	6 $\frac{3}{8}$	5	2 $\frac{1}{8}$	4 $\frac{5}{16}$	1 $\frac{1}{8}$		—	—	14	80	11
361T	2 $\frac{1}{2}$ "	Threaded	8 $\frac{1}{4}$	5 $\frac{5}{8}$	2 $\frac{5}{8}$	5 $\frac{3}{8}$	1 $\frac{1}{2}$		—	—	16 $\frac{1}{4}$	95	26
362F	3	Flanged	8	5 $\frac{5}{8}$	2 $\frac{5}{8}$	5 $\frac{3}{8}$	1 $\frac{1}{2}$	7 $\frac{1}{2}$	$\frac{3}{4}$	6	16 $\frac{1}{4}$	160	37
363F	4	Flanged	9	6 $\frac{3}{4}$	3 $\frac{1}{4}$	6	1 $\frac{1}{2}$	9	1 $\frac{5}{16}$	7 $\frac{1}{2}$	16 $\frac{1}{4}$	260	54
364F	5	Flanged	10	6 $\frac{3}{4}$	3 $\frac{1}{4}$	6	1 $\frac{1}{2}$	10	1 $\frac{5}{16}$	8 $\frac{1}{2}$	16 $\frac{1}{4}$	460	70
365F	6	Flanged	10 $\frac{1}{2}$	10 $\frac{5}{8}$	5	7 $\frac{3}{8}$	2 $\frac{3}{8}$	11	1	9 $\frac{1}{2}$	33 $\frac{3}{8}$	730	117
366F	8	Flanged	11 $\frac{1}{2}$	9	5 $\frac{3}{4}$	7 $\frac{7}{8}$	2 $\frac{3}{8}$	13 $\frac{1}{2}$	1 $\frac{1}{8}$	11 $\frac{3}{4}$	33 $\frac{3}{8}$	1100	180

PRESSURE LOSS CURVE



Typical Specifications

Furnish Multi-Purpose Valve, Taco 360 Series or equal on the discharge side of each pump where indicated on the plans. The valves are to combine a balancing valve, check valve, and shut off valve in a single body AND BE SUITABLE FOR HORIZONTAL AND/OR VERTICAL MOUNTING. NO STEM PACKING ADJUSTMENT SHALL BE REQUIRED. The valves shall be provided with an adjustable memory stop. THE CHECK VALVE SHALL BE TIGHT CLOSING AGAINST AN ELASTOMER SEAT AND BE REMOVABLE SEPARATELY. FULL OPEN TO FULL CLOSE SHALL BE ACCOMPLISHED WITH $\frac{1}{4}$ TURN.

Flow-Rate-GPM-Water at 70°F